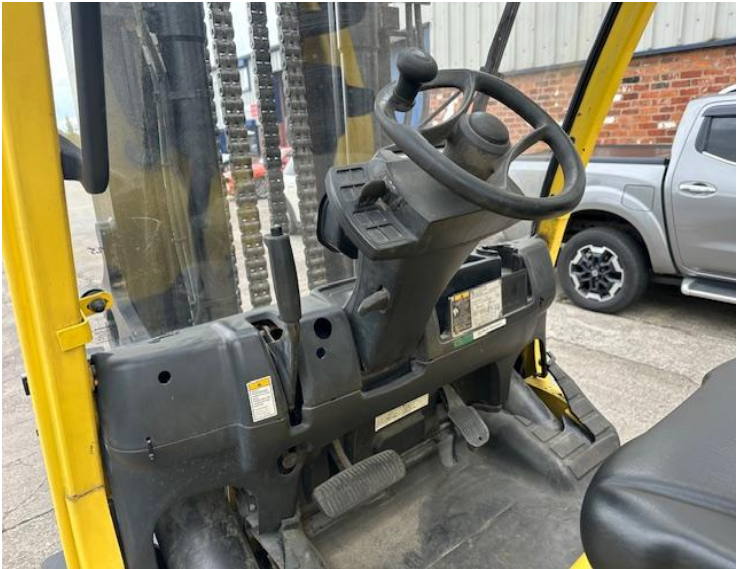




Our Reference	HD 1639
Category	Forklifts 1 to 10 Tonne
Title	Hyster s9.0ft
Make	Hyster
Model	s9.0ft
Age	2010
Mast	Duplex
Hours	13,835
Mast Closed	2500mm
Engine Type	Diesel
Lift Capacity	2250mm Max Lift, 3rd Hydraulics







Trained Operators and Mechanics Only

Read Operating Manual located on seat or in operators compartment

Failure to follow operating, inspection, and maintenance instructions can cause serious injury or death!

CAPACITY WITH MAST VERTICAL AND EQUIPPED AS SHOWN

CE

MAXIMUM CAPACITY

	Load Height Dim. A	Load Centre Dim. B	Dim. C
8900 kg	5410 mm	600 mm	600 mm
8010 kg	5410 mm	900 mm	900 mm

DuraMatch Transmission

1589007.01

1589007.01



01704 840859 / 07710 084386

Email:sales@hdforklifts.co.uk

HD Forklifts, Unit 2, Heaton Court, Smithy Lane, Scarisbrick, Lancashire, L40 8HS

May 20, 2024, 10:42 pm

