

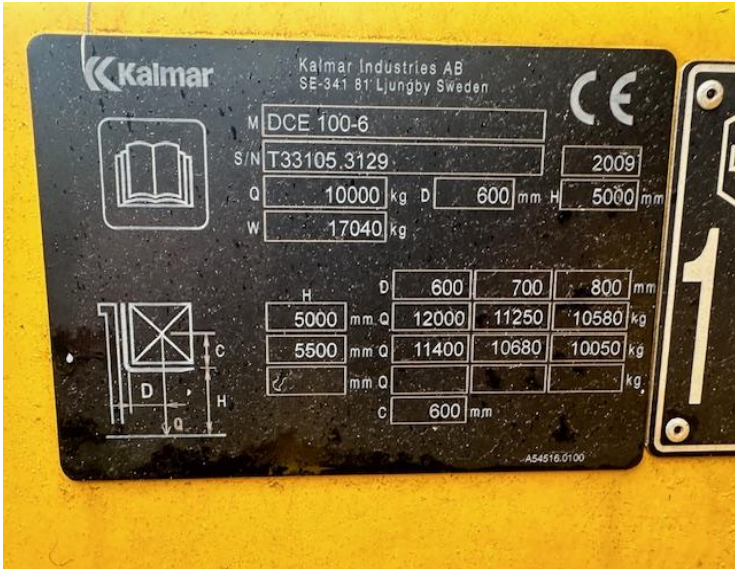
# HEAVY DUTY FORKLIFTS

<b>Our Reference</b>	HD 1652
<b>Category</b>	Forklifts 10 to 60 Tonne
<b>Title</b>	Kalmar Dce 100-6
<b>Make</b>	Kalmar
<b>Model</b>	Dce 100-6
<b>Age</b>	2009
<b>Mast</b>	2Ffl
<b>Hours</b>	6,776
<b>Mast Closed</b>	3750mm
<b>Engine Type</b>	Diesel
<b>Lift Capacity</b>	4500mm Max Lift, Side Shift & Fork Positioners, 2800mm Forks









01704 840859 / 07710 084386

Email:sales@hdforklifts.co.uk

HD Forklifts, Unit 2, Heaton Court, Smithy Lane, Scarisbrick, Lancashire, L40 8HS

April 3, 2025, 9:16 am

