

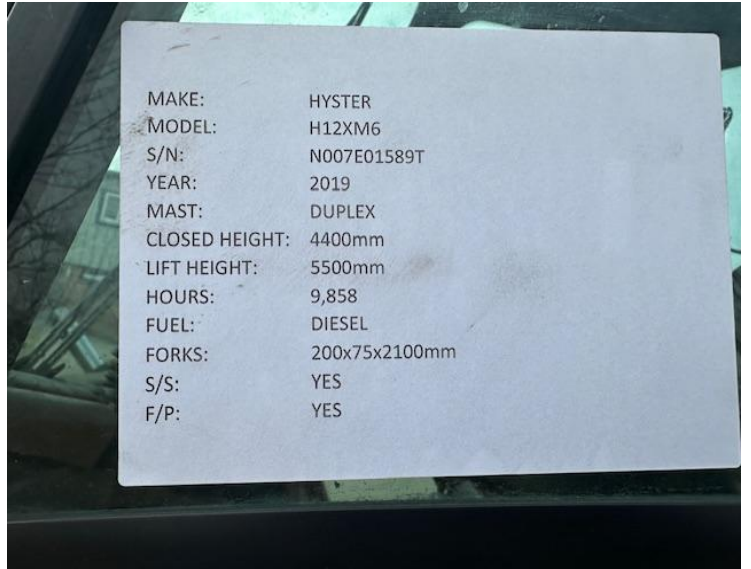
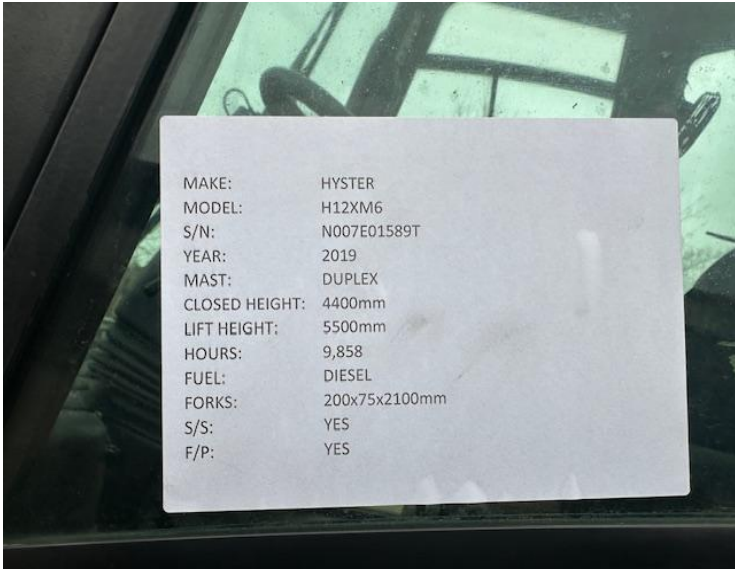
# HEAVY DUTY FORKLIFTS

|                      |  |
|----------------------|--|
| <b>Our Reference</b> | HD 1668  |
| <b>Category</b>      | Forklifts 10 to 60 Tonne                                     |
| <b>Title</b>         | Hyster h12xm6  |
| <b>Make</b>          | Hyster   |
| <b>Model</b>         | h12xm-6  |
| <b>Age</b>           | 2019   |
| <b>Mast</b>          | Duplex   |
| <b>Hours</b>         | 9,858  |
| <b>Mast Closed</b>   | 4400mm   |
| <b>Engine Type</b>   | Diesel   |
| <b>Lift Capacity</b> | 5500mm Max Lift, Side Shift & Fork Positioners, 2100mm Forks |



















01704 840859 / 07710 084386

Email:sales@hdforklifts.co.uk

HD Forklifts, Unit 2, Heaton Court, Smithy Lane, Scarisbrick, Lancashire, L40 8HS

April 3, 2025, 9:15 am