

HEAVY DUTY FORKLIFTS

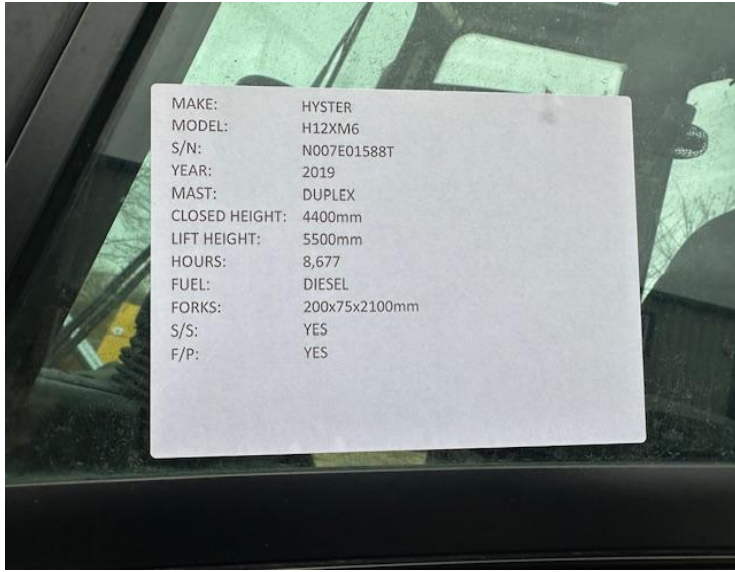
Our Reference	HD 1669
Category	Forklifts 10 to 60 Tonne
Title	Hyster h12xm6
Make	Hyster
Model	h12xm-6
Age	2019
Mast	Duplex
Hours	8,677
Mast Closed	4400mm
Engine Type	Diesel
Lift Capacity	5500mm Max Lift, Side Shift & Fork Positioners, 2100mm Forks





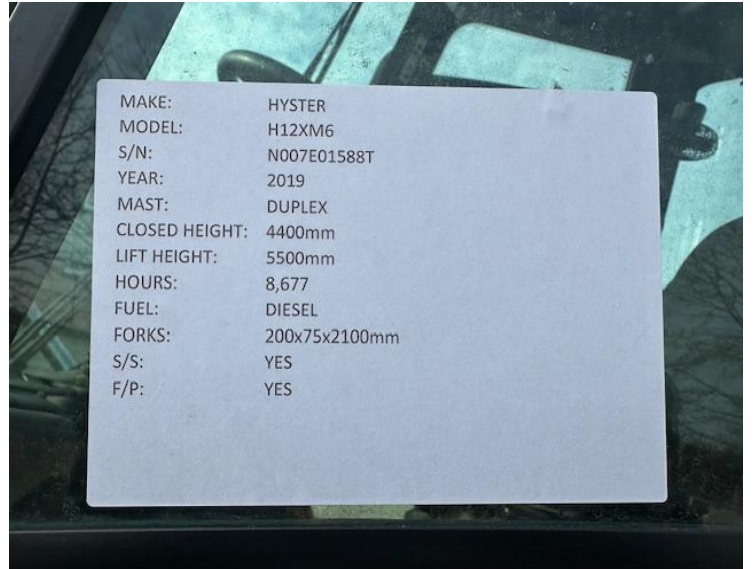












01704 840859 / 07710 084386

Email:sales@hdforklifts.co.uk

HD Forklifts, Unit 2, Heaton Court, Smithy Lane, Scarisbrick, Lancashire, L40 8HS

May 17, 2026, 7:14 pm

