

# HEAVY DUTY FORKLIFTS

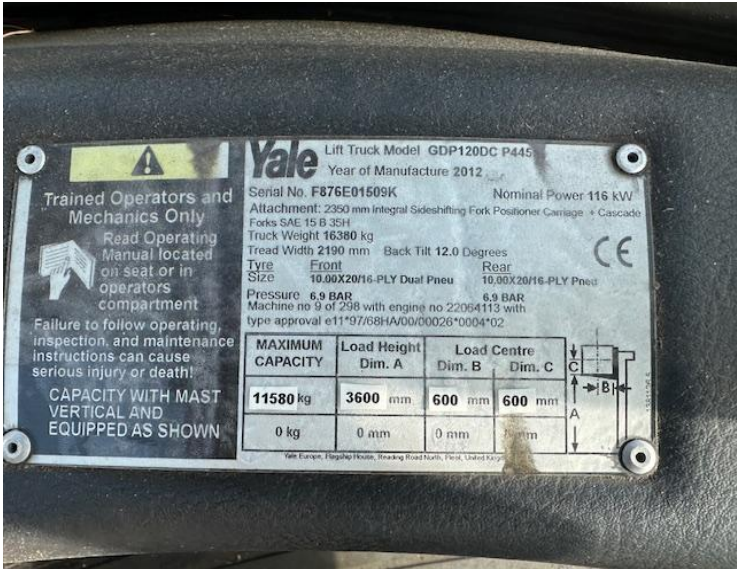
<b>Our Reference</b>	HD 1675
<b>Category</b>	Forklifts 10 to 60 Tonne
<b>Title</b>	Yale Gdp120dc
<b>Make</b>	Yale
<b>Model</b>	Gdp120dc
<b>Age</b>	2012
<b>Mast</b>	Duplex
<b>Hours</b>	18,298
<b>Mast Closed</b>	3750mm
<b>Engine Type</b>	Diesel
<b>Lift Capacity</b>	3600mm Max Lift, Side Shift & Fork Positioners, 2100mm Forks













**Trained Operators and Mechanics Only**

Read Operating Manual located on seat or in operators compartment

Failure to follow operating, inspection, and maintenance instructions can cause serious injury or death!

**CAPACITY WITH MAST VERTICAL AND EQUIPPED AS SHOWN**

**Yale** Lift Truck Model GDP120DC P445  
Year of Manufacture 2012

Serial No. F876E01509K      Nominal Power 116 kW  
Attachment: 2350 mm Integral Sideshifting Fork Positioner Carriage + Cascade  
Forks SAE 15 B 35H  
Truck Weight 16380 kg  
Tread Width 2190 mm      Back Tilt 12.0 Degrees

Tyre      Front      Rear  
Size      10.00X20/16-PLY Dual Pneu      10.00X20/16-PLY Pneu

Pressure 6.9 BAR      6.9 BAR  
Machine no 9 of 298 with engine no 22054113 with type approval e11\*97768/HA/00/00026\*0004\*02

MAXIMUM CAPACITY	Load Height Dim. A	Load Centre	
		Dim. B	Dim. C
6800 kg	5400 mm	1500 mm	1500 mm
0 kg	0 mm	0 mm	mm

Yale Europe, Flagship House, Reading Road North, Flint, United Kingdom



01704 840859 / 07710 084386

Email:sales@hdforklifts.co.uk

HD Forklifts, Unit 2, Heaton Court, Smithy Lane, Scarisbrick, Lancashire, L40 8HS

May 26, 2026, 8:48 am

