

HYSTER H18XM9

Hyster — Forklifts 10 to 60 Ton

Ref **HD1674**

2017

YEAR

15,049

HOURS

5400mm max lift

CAPACITY

DIESEL

ENGINE

DUPLEX

MAST

GENERAL

Reference	HD 1674
Make	Hyster
Model	H18.00XM9
Year	2017
Hours	15,049

CAPACITY

Lift Capacity	5400mm max lift
---------------	------------------------

MAST

Mast Type	DUPLEX
Mast Closed	4400mm

ENGINE

Engine Type	DIESEL
-------------	---------------

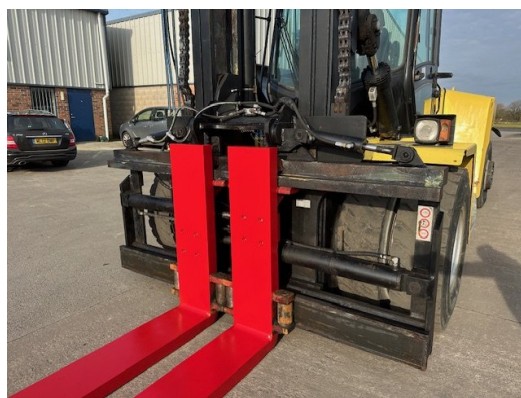


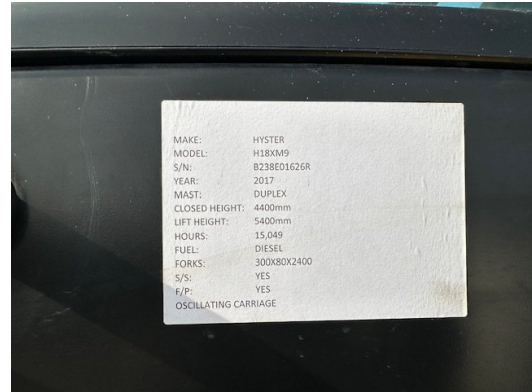
Side shift & Fork positioners, 2400mm forks

https://hdforklifts.co.uk/view/forklifts_10_to_60_tonne/hyster-h18xm9/1674

Call **01704 840859** • Email sales@hdforklifts.co.uk • www.hdforklifts.co.uk

Gallery





MAKE:	HYSTER
MODEL:	H18XM9
S/N:	B238E01626R
YEAR:	2017
MAST:	DUPLEX
CLOSED HEIGHT:	4400mm
LIFT HEIGHT:	5400mm
HOURS:	15,049
FUEL:	DIESEL
FORKS:	300X80X2400
S/S:	YES
F/P:	YES
OSCILLATING CARRIAGE	

