

# KALMAR ECG140-6

Kalmar — Forklifts 10 to 60 Ton

Ref **HD1694**

**2019**

YEAR

**12,370**

HOURS

**8000mm max lift**

CAPACITY

**BATTERY**

ENGINE

**3FFL**

MAST

## GENERAL

Reference	<b>HD 1694</b>
Make	<b>Kalmar</b>
Model	<b>ECG140-6</b>
Year	<b>2019</b>
Hours	<b>12,370</b>

## CAPACITY

Lift Capacity	<b>8000mm max lift</b>
---------------	------------------------

## MAST

Mast Type	<b>3FFL</b>
Mast Closed	<b>4400mm</b>

## ENGINE

Engine Type	<b>BATTERY</b>
-------------	----------------

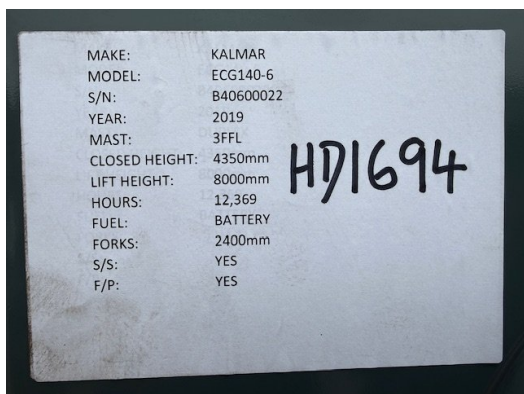
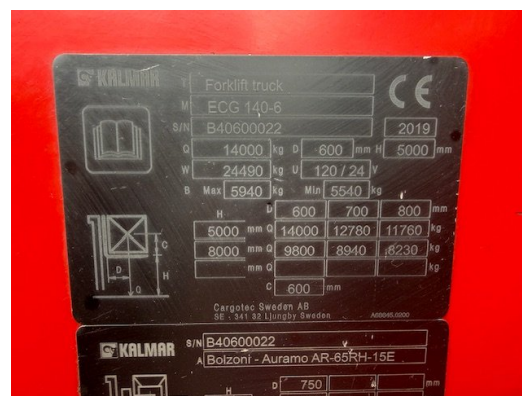


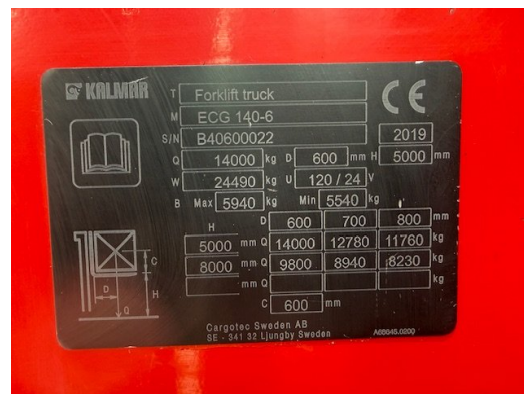
Side shift & Fork positioners, 2400mm forks

[https://hdforklifts.co.uk/view/forklifts\\_10\\_to\\_60\\_tonne/kalmar-ecg140-6/1694](https://hdforklifts.co.uk/view/forklifts_10_to_60_tonne/kalmar-ecg140-6/1694)

Call **01704 840859** • Email [sales@hdforklifts.co.uk](mailto:sales@hdforklifts.co.uk) • [www.hdforklifts.co.uk](http://www.hdforklifts.co.uk)

# Gallery





T Forklift truck		CE	
ECG 140-6			
S/N	B40600022	2019	
Q	14000 kg	D	600 mm
W	24490 kg	U	120 / 24 V
B Max	5940 kg	Min	5540 kg
H	600 mm	700 mm	800 mm
5000 mm Q	14000 kg	12780 kg	11760 kg
8000 mm Q	9800 kg	8940 kg	8230 kg
mm Q			kg
C	600 mm		
Cargotec Sweden AB SE - 841 32 Ljungby Sweden			

