

Heli CPD100

Heli — Forklifts 10 to 60 Ton

Ref HD1714

2025

YEAR

13

HOURS

6,800kgs @600mm at max lift height of 5500mm

CAPACITY

Lithium Electric

ENGINE

3FFL

MAST

GENERAL

Reference	HD 1714
Make	Heli
Model	CPD100
Year	2025
Hours	13

CAPACITY

Lift Capacity	6,800kgs @600mm at max lift height of 5500mm
---------------	---

MAST

Mast Type	3FFL
Mast Closed	3300mm

ENGINE

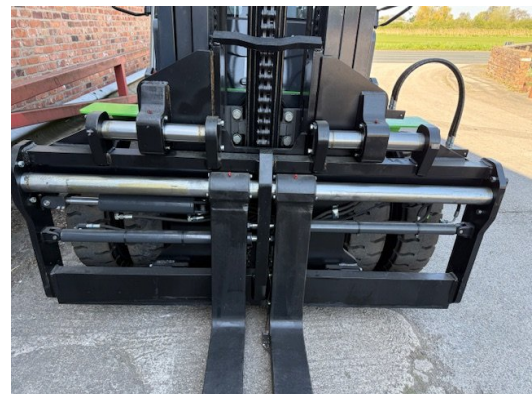
Engine Type	Lithium Electric
-------------	-------------------------



side shift & fork positioners 1600mm forks

https://hdforklifts.co.uk/view/forklifts_10_to_60_tonne/heli-cpd100/1714Call **01704 840859** • Email sales@hdforklifts.co.uk • www.hdforklifts.co.uk

Gallery



MAKE: HELI
 MODEL: CPD100
 S/N: 051003P1525
 YEAR: 2025
 MAST: 3FFL
 CLOSED HEIGHT: 3300mm
 LIFT HEIGHT: 5500mm
 HOURS: 13
 FUEL: LITHIUM
 FORKS: 1600mm
 S/S: YES
 F/P: YES



Actual Capacity				
Model	Z5M-350			
Attachment	F231140001			
Max. Lift Height	5500			
	Capacity (kg)			
	3300	4500	5000	5400
	3500	4200	4700	5100
	3800	3800	4300	4700
<small>Capacity when the mast is lowered (depends on load)</small>				
HELI ELECTRIC COUNTERBALANCED FORKTRUCK				
Model	CPD100	Configuration No.	AT11162M	
Rated Capacity	1000 Kg	Total Weight	16190 Kg	
Rated Voltage	336 V	Total Weight	14320 Kg	
Rated Power	30kW	Rated Weight	670 Kg	
Serial No.	051003P1525	Rated Weight	730 Kg	
<small>The Year of Construction</small>		<small>MADE IN CHINA</small>		
<small>ANHUU HELI CO., LTD.</small>		<small>Add: No. 655, Shengping Road, Heifei, Anhui Province, P.R.China</small>		

